



UNIVERSITY of HAWAII at MĀNOA

COLLEGE OF TROPICAL AGRICULTURE
AND HUMAN RESILIENCE



DEPARTMENT OF

Plant and Environmental Protection Sciences

Agrosecurity Laboratory

C-GAPS Update 12.2.2025

Michael Melzer
Associate Researcher
melzer@hawaii.edu
(808) 956-7887

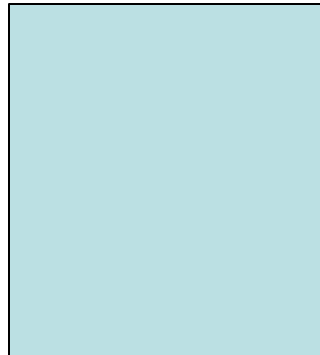
College Update



Parwinder Grewal
Dean & Director



Catherine Chan
Interim Associate Dean of
Academic & Student Affairs



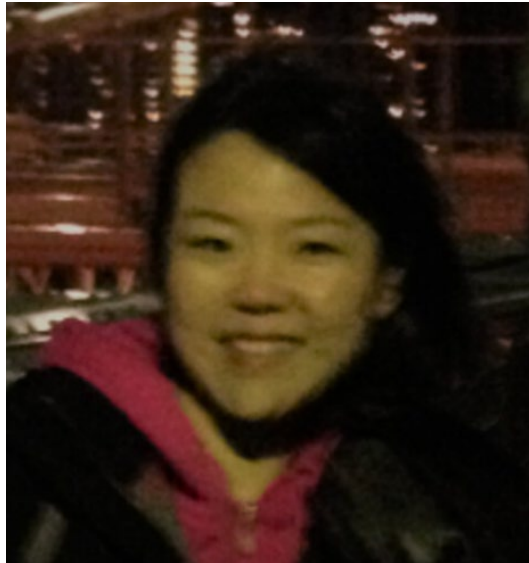
Associate Dean
Cooperative Extension



Kevin Olival
Associate Dean
Research

Department Update

- Faculty Recruitments
 - Plant Virologist started in August 2025
 - Weed scientist hopefully advertised soon



Jing Zhou
Plant Virology

Lab Updates

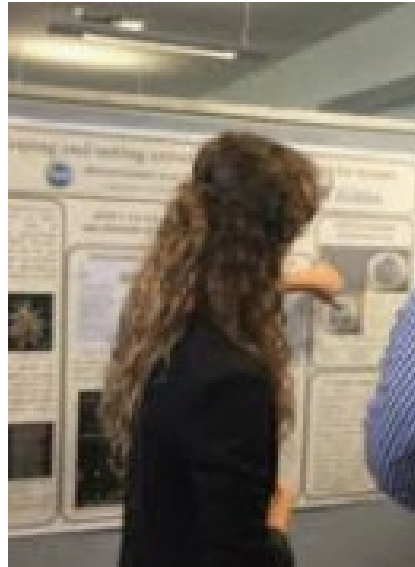
- New Personnel



Julia Yuson
PhD student



Luna Ogando
MS Student



Kristen Gaines
PhD Student



Salvador Simpson
MS Student



PaCoN
PACIFIC CONTINENTAL NETWORK

Lab Updates

- Cooperative Agricultural Pest Surveys
 - Citrus Commodity Survey (6 insects, 3 nematodes)
 - Tropical Host Survey (1 insects, 2 pathogens)
 - Palm Commodity Survey (3 insects, 2 pathogens)
 - Citrus Huanglongbing (1 pathogen)
- PPA7721 Surveys
 - Palm Commodity Survey (4 insects, 2 pathogens)
 - Solanaceous Pest Survey (5 pathogens)

Lab Updates



- Putative new disease of pomegranate in Hawaii

Lab Updates



- Characterizing viruses affecting plumeria
- Develop procedure for treating cuttings

Lab Updates

- Collecting virus isolates for CRB biocontrol
– Palau



Lab Updates

- Collecting virus isolates for CRB biocontrol
 - Palau
 - American Samoa
 - Malaysia
 - Indonesia
 - Thailand
 - Vietnam
 - Cambodia

Lab Updates

- Rearing insects for host range testing

